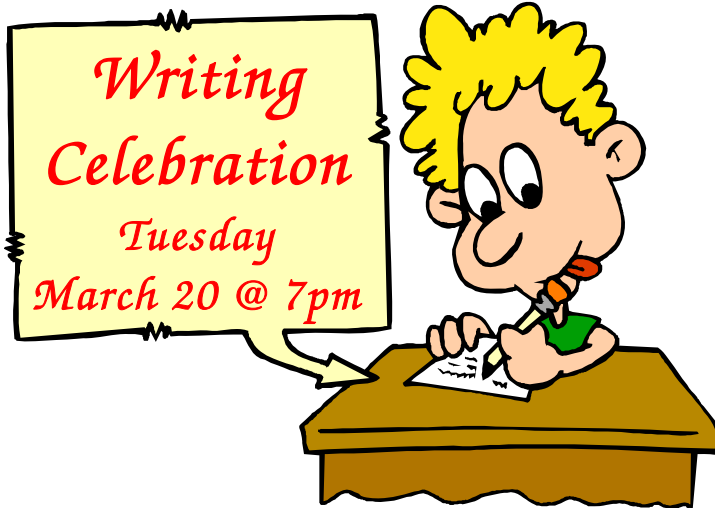




MARCH 2012

[www.rochesterschools.com/Allen/index.html](http://www.rochesterschools.com/Allen/index.html)



### Ongoing Happenings:

- 🕒 School Store: Tuesdays 8-8:25am
- 🕒 School Bank: Tuesdays 1:30pm
- 🕒 Beg. Band Rehearsal: Tuesdays 4-5pm @ RMS
- 🕒 Jump Rope Club: Wednesdays 7:45-8:25am
- 🕒 Adv. Band Rehearsal: Thursdays 4-5pm @ RMS
- 🕒 Chorus: Thursdays & Fridays 8:15-8:45am
- 🕒 25¢ Popcorn Fridays: Mar. 9 & 23
- 🕒 PTA Mtg.: Tuesday Mar. 20 @ 7pm

### Don't Forget:

- Apr 27- No School
- Mar 2 Winter Vacation
- Mar 16 No School
- Teacher Workshop
- Mar 30 Term 3 Marks Close


### In the Spotlight:

- ☺ Gazpacho 80's Band PTA Fundraiser is Saturday, Mar. 10 at Dover Bowl. Doors open at 7:30pm. Attendees must be at least 21 years old. Great live music, dancing, raffles, 50/50, full menu and more. Prepaid tickets are \$15 sold at Ralph's House of Tone in Dover, USA Postal Center in Rochester and Dover Bowl or by contacting Karen Enscoe at 312-0505 or [enscoe@metrocast.net](mailto:enscoe@metrocast.net). Tickets are \$20 at the door. **Tickets are going fast, so act soon!** Don't miss this "totally awesome 80's experience"!
- ☺ Writing Celebration will be on Tuesday, Mar. 20 6-7pm. Join us as we take this opportunity to celebrate students as writers. Families meet in classrooms to hear students read their stories. There will be time to view published pieces, rough drafts, and photos of the writing process. At 7pm, everyone is invited to the gym for refreshments and drawings of door prizes. Please be sure to celebrate with us!
- ☺ The monthly PTA meeting will be held on Tuesday, March 20 immediately following the Writing Celebration. Free childcare is provided during PTA meetings. Everyone is encouraged to attend. PTA is an important part of the school community and your participation is needed. Please join us!



### IMPORTANT NOTICE:

You need to call the school office when your child is going to be absent. You can call the office anytime day or night to let us know your child's name and teacher.

 332-2280

### ***WAS PTA needs your help!***

The Gazpacho night was our biggest fundraiser last year raising over \$3,600 for WAS! We'd like to meet or exceed that goal this year, but we need your help! PTA needs volunteers to sell raffle tickets in short shifts (approx. ½ hour) the night of the event. As an incentive, a limited number of the first volunteers to sign up will be reimbursed \$10 each for their ticket! PTA is also in need of raffles prize donations like gift certificates, event tickets, gift baskets, etc. Contact Karen Enscoe at 312-0505 or [enscoe@metrocast.net](mailto:enscoe@metrocast.net) if you can lend a hand.



## Things you should know...

- ☞ We will be sending home a Parent Survey with your child at the beginning of this month. The survey asks for your feedback on subjects such as academics, home-school connection, school support, communication and parent involvement. We highly encourage you to take the time to complete the survey. Your responses and feedback are important to us and will remain anonymous. Please complete and return the survey to school by Friday, March 9.
- ☞ Nominations for 2012-2013 PTA Officer Positions can be submitted to Nicole Paul at [npaul816@yahoo.com](mailto:npaul816@yahoo.com). All 4 officer positions are accepting nominations: President, Vice President, Secretary and Treasurer. Parents who get involved in their child's school have long term, positive effects on both the child's academic performance and their overall attitude towards school.
- ☞ Last month, all Rochester elementary schools teamed up to promote kindness in the schools called Chains of Kindness. After 3 weeks, our kindness chain ended up being well over 200 feet long extending the perimeter of our cafeteria. Wow, do we have some kind wildcats here at William Allen School! One student from each classroom was nominated by their peers for consistently showing kindness. Each nominated student gathered for a group picture with our school mascot, Whiskers. One lucky name was drawn from the nominated students to accompany Whiskers to the March 8 School Board Meeting where our Chain of Kindness will be linked with all the other schools' chains and presented to the School Board.



### 2011-2012 YEARBOOKS

On sale through Friday, March 30

\$12 - yearbook only

\$14 - yearbook w/ photo & name personalization

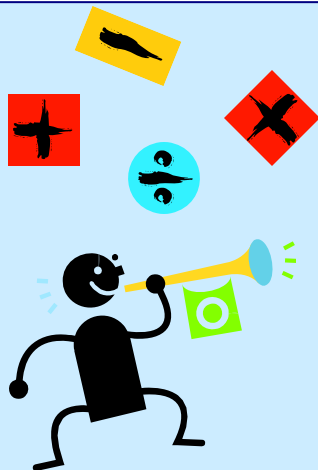
Contact Gwen Pham @ 973-2163 or [gwenpham@metrocast.net](mailto:gwenpham@metrocast.net) to order.



Amaya at the NH State Spelling Bee in Concord on March 3. Everyone at WAS will be thinking of you! We know you'll make us proud!



## Let the games begin!



Math Fact Fluency Olympics are here! Opening Ceremonies were kicked off just before Winter Vacation. Students in grades K-5 across all Rochester elementary schools are participating. Students are asked to practice math facts at home and record the minutes practiced each day in a math log. Students who practice for at least 30 minutes each week will earn extra recess. The Olympics runs March 5 through April 9. "Mathletes" will be recognized at the end of the Olympics for their achievements in mastering math facts. How can your child practice at home? By playing card or board games, playing math games online, practicing fact triangles or flash cards, look for math opportunities in everyday life (counting change, measuring while cooking, etc.).



## VARIETY SHOW



Congratulations to those students that were chosen to participate in this year's Variety Show. Many talented students tried out for the show and it was difficult to narrow it down to our final acts. All students did a super job! Practices for those students that are in the show will be on Wednesdays from 3 to 5pm March 7 through April 4. There will be two Variety Shows: Wednesday, April 18 at 6:30pm and Friday, April 20 at 1:15pm.



## KNICK-KNACKS...

### Monthly Math Blurb

**Fact Fluency Olympics:** Mathletes from Rochester are practicing their math facts to earn extra recess, certificates of recognition, and/ or medals. However, the greatest reward will be the growth in mathematical abilities. Please help support your Mathlete by playing board games, card games, and by practicing with flashcards or fact triangles. You can also look for math opportunities that occur throughout the day; counting change while shopping, telling time, helping with measuring objects or while cooking. By supporting your Mathlete, you will be giving them an opportunity to shine!



- Students should continue to study for the upcoming Geography Bee. Classroom Geography Bees will be held this month. The top two winners from each class will move on to the school Geography Bee on May 9 at 6:30pm. Good luck everyone!
- NH Fisher Cats Reading Challenge postcards are due by March 15. Students read 5 books, list them on the postcard, choose a game, fill in all other required info. and mail it to receive 2 FREE tickets to a NH Fisher Cats game. Additional tickets can be purchased for \$8 each.
- The Music In Our Schools Concert is on Saturday, March 31 at 10:30am at the Rochester Community Center. All Rochester students in grades 4 through 12 in band and/or chorus will be performing. Come see the many young, talented singers and musicians and support *Music In Our Schools!*

## Looking Ahead...



- Apr 6 Term 3 Report Cards sent home
- Apr 11 Early Release 1:15pm
- Apr 12 Band Step-Up Concert @ RMS 4-6:45pm
- Apr 18 Variety Show 6:30-8pm
- Apr 20 Variety Show 1:15-2:45pm
- Apr 23- No School
- Apr 27 Spring Vacation

\*April PTA Meeting TBD

## WAS on the Web...



Check your child's [classroom website](#) weekly for class updates. Don't forget to take a look at our [Family Connection](#) website updated weekly with important school wide information. Bookmark these two sites and be an informed WAS parent!

"You can make a difference by just being kind to someone today." Author Unknown