

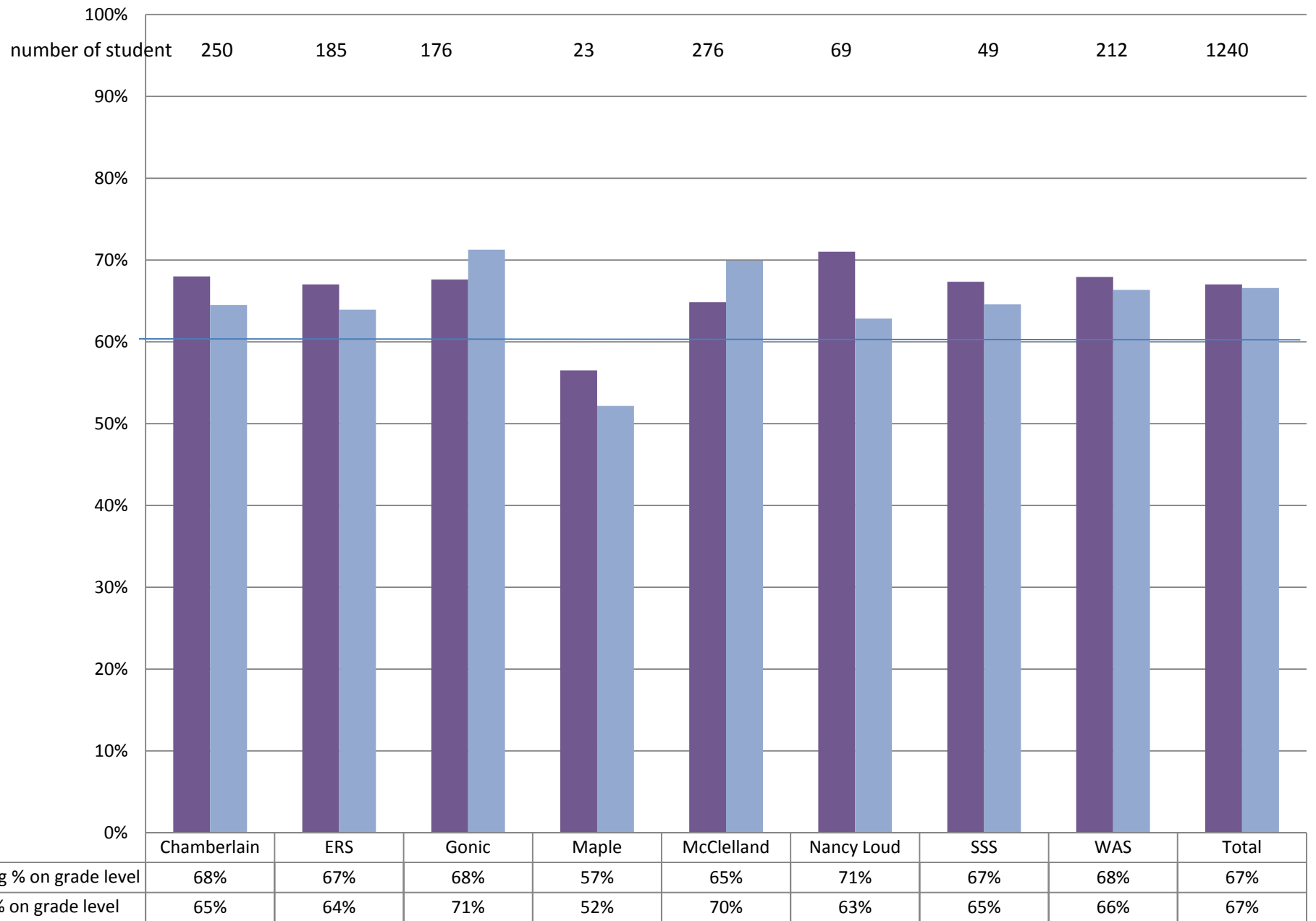
# November 2011

- Fall 2011 on Grade level for Reading and Math
- Fall Reading History
- Fall Math History
- Review of the overall improvement from 2004
- Free and Reduced Lunch Data
- Special Education Data

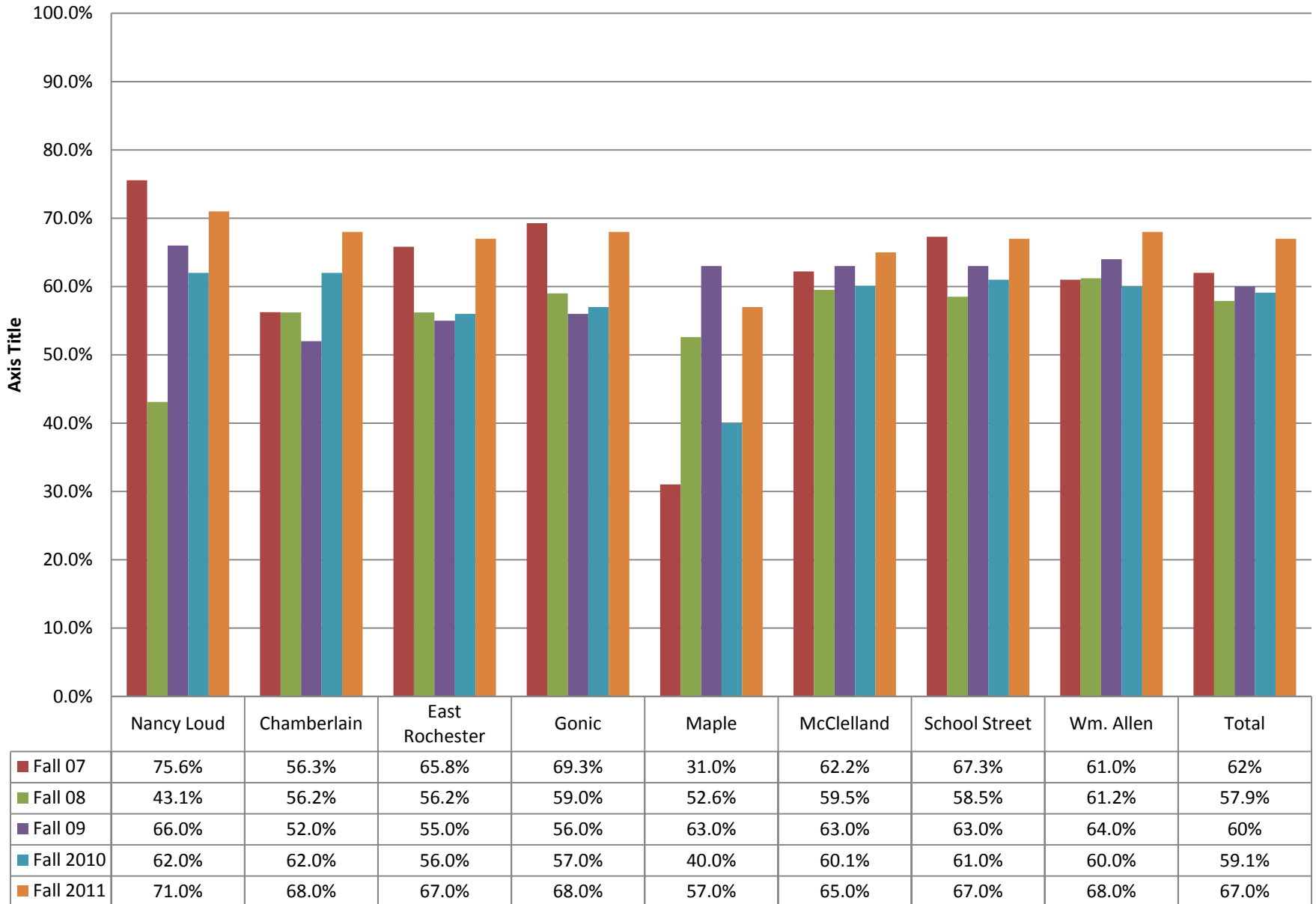
# NWEA Assessment Schedule

- Fall Grades 2 to 5, Reading and Math
- Winter, Optional
- Spring, Grades 2 to 10
- Fall, Spaulding Math Classes

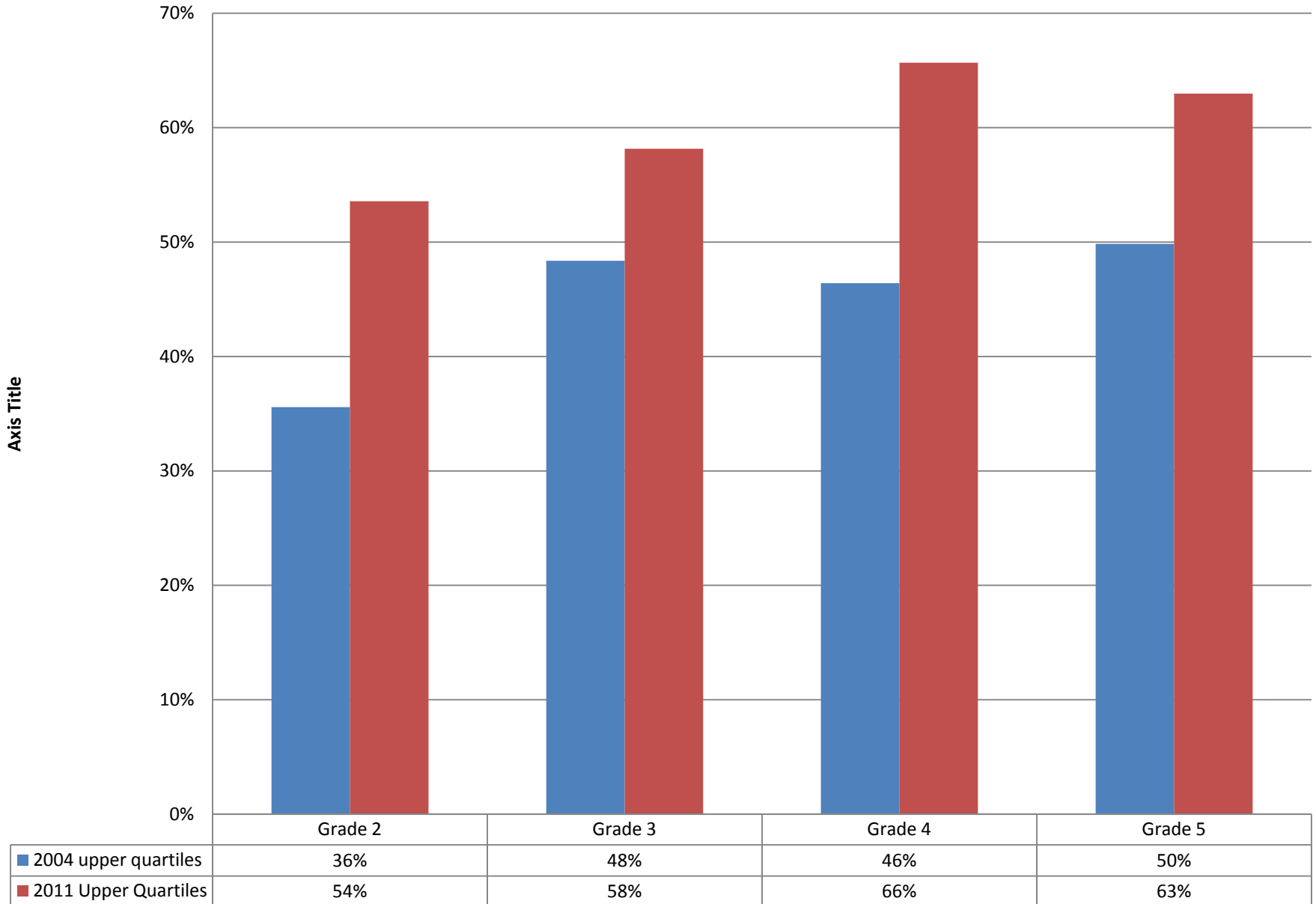
# Fall 2011 on Grade level



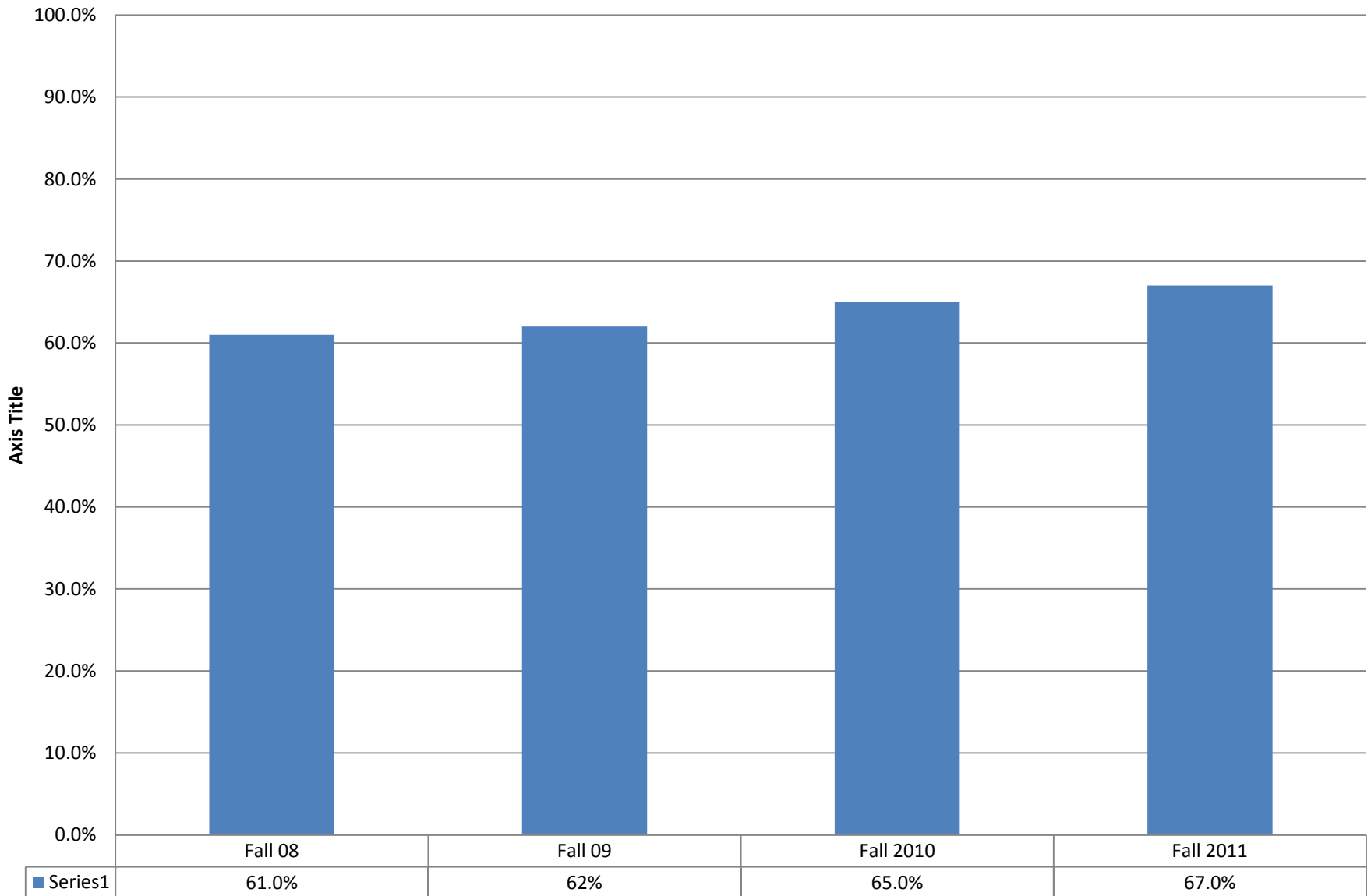
# Fall Reading History



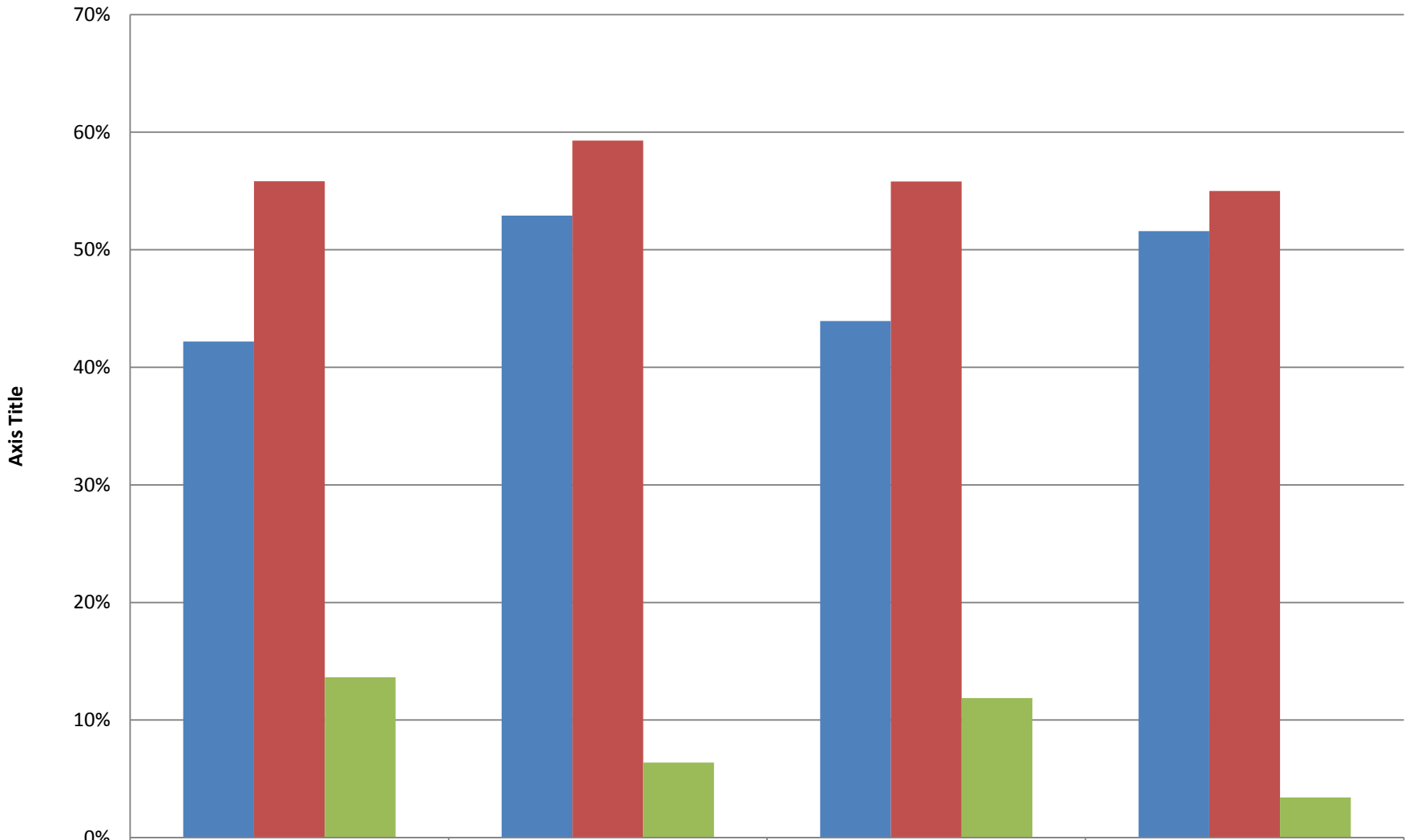
# Reading from 2004 to 2011



# Fall on Grade Level Math Grade 2-5

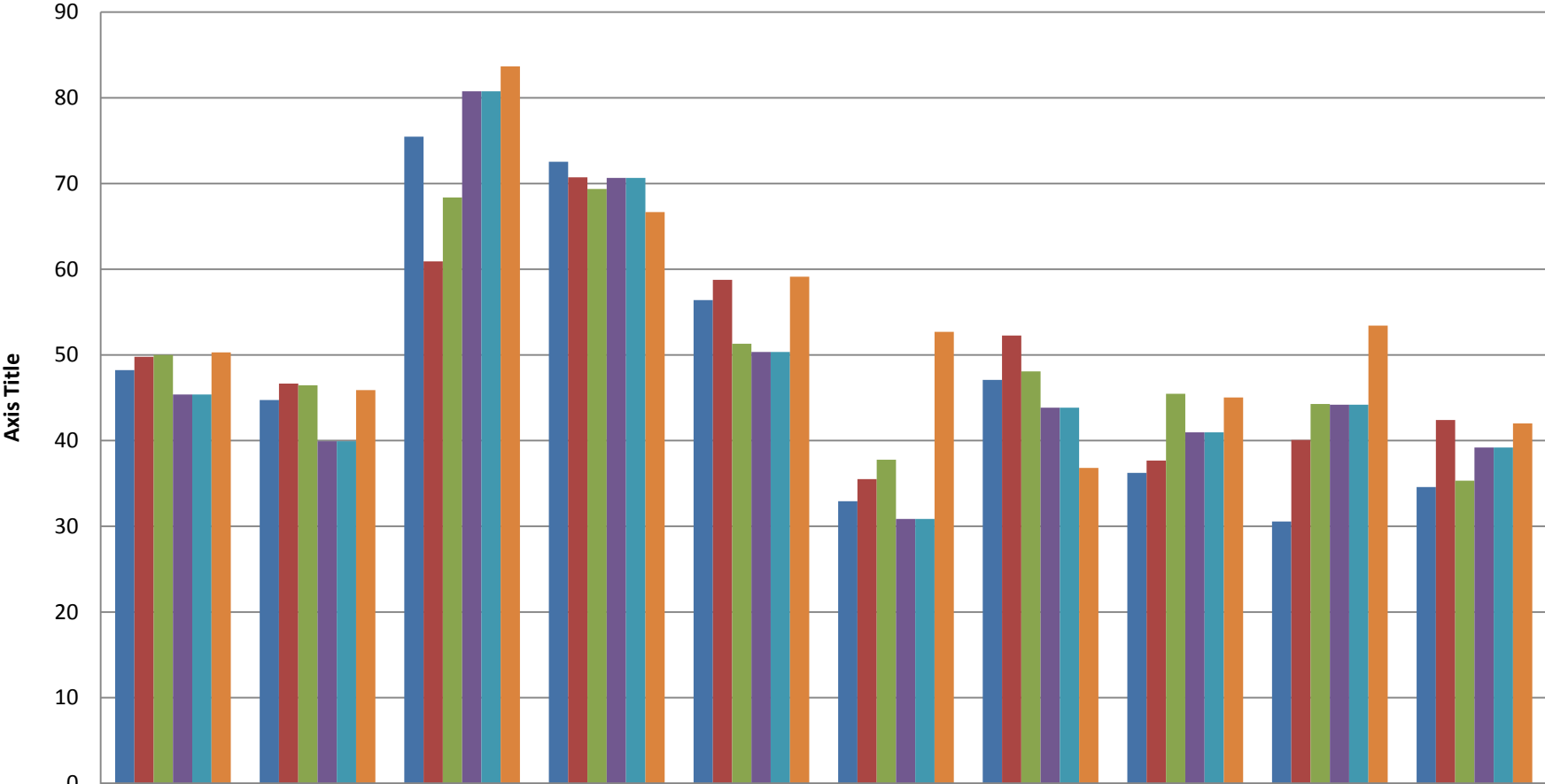


# Upper Quartiles Math 2004 to 2011



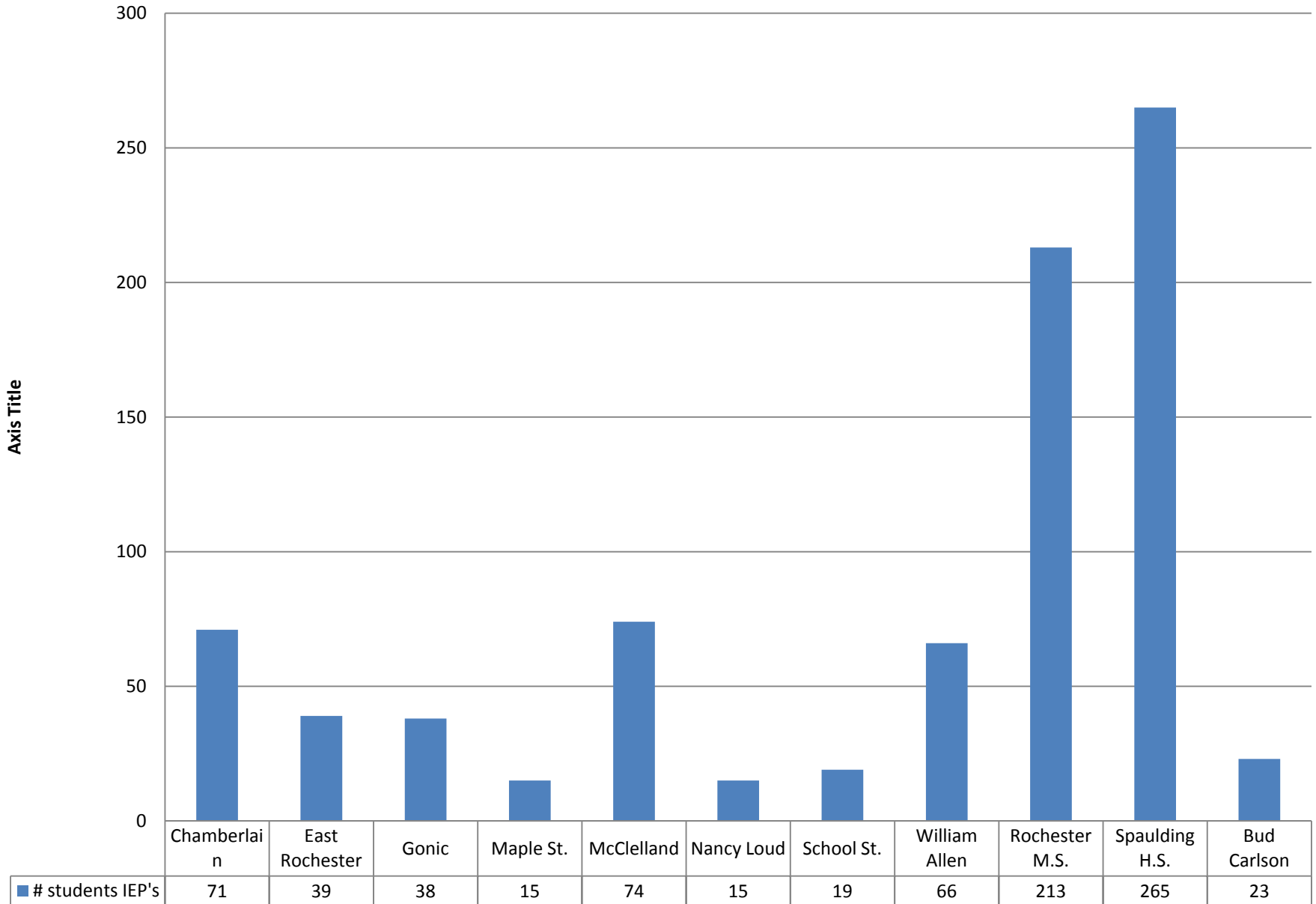
■ 2004	42%	53%	44%	52%
■ 2011	56%	59%	56%	55%
■ difference	14%	6%	12%	3%

# Free and Reduced Lunch Percentage

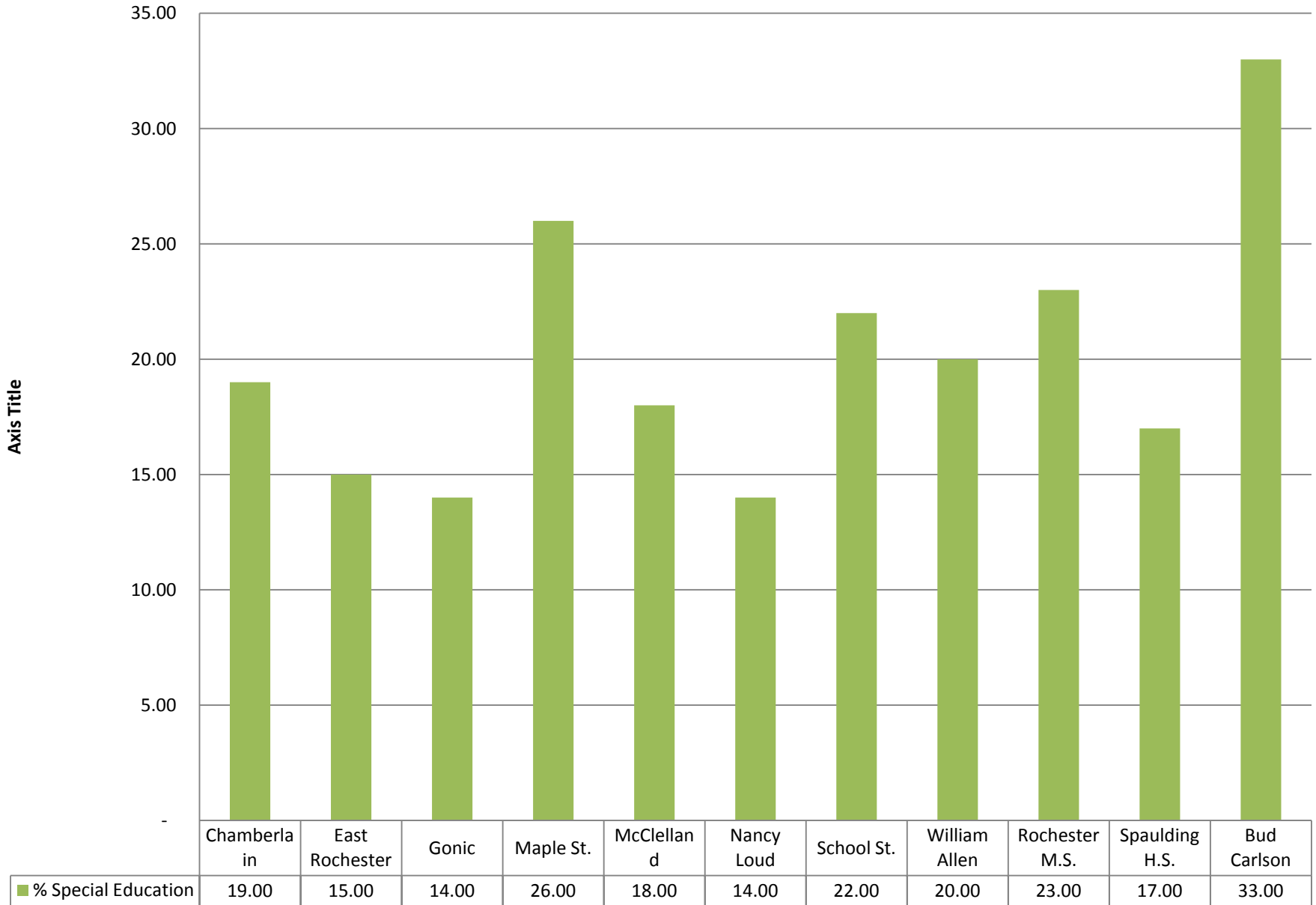


	Elementary Average	District Average	Maple	School St.	Wm. Allen	Nancy Loud	E. Rochester	McClland	Chamberlain	Gonic
05-06	48.22	44.73	75.47	72.54	56.4	32.92	47.08	36.23	30.57	34.59
06-07	49.79	46.66	60.92	70.72	58.76	35.51	52.27	37.68	40.08	42.4
07-08	49.99	46.46	68.37	69.37	51.3	37.77	48.08	45.47	44.28	35.33
08-09	45.39	39.92	80.76	70.66	50.34	30.86	43.85	40.97	44.19	39.19
09-10	45.39	39.92	80.76	70.66	50.34	30.86	43.85	40.97	44.19	39.19
10-11	50.3	45.9	83.67	66.67	59.12	52.7	36.82	45.03	53.42	42.01

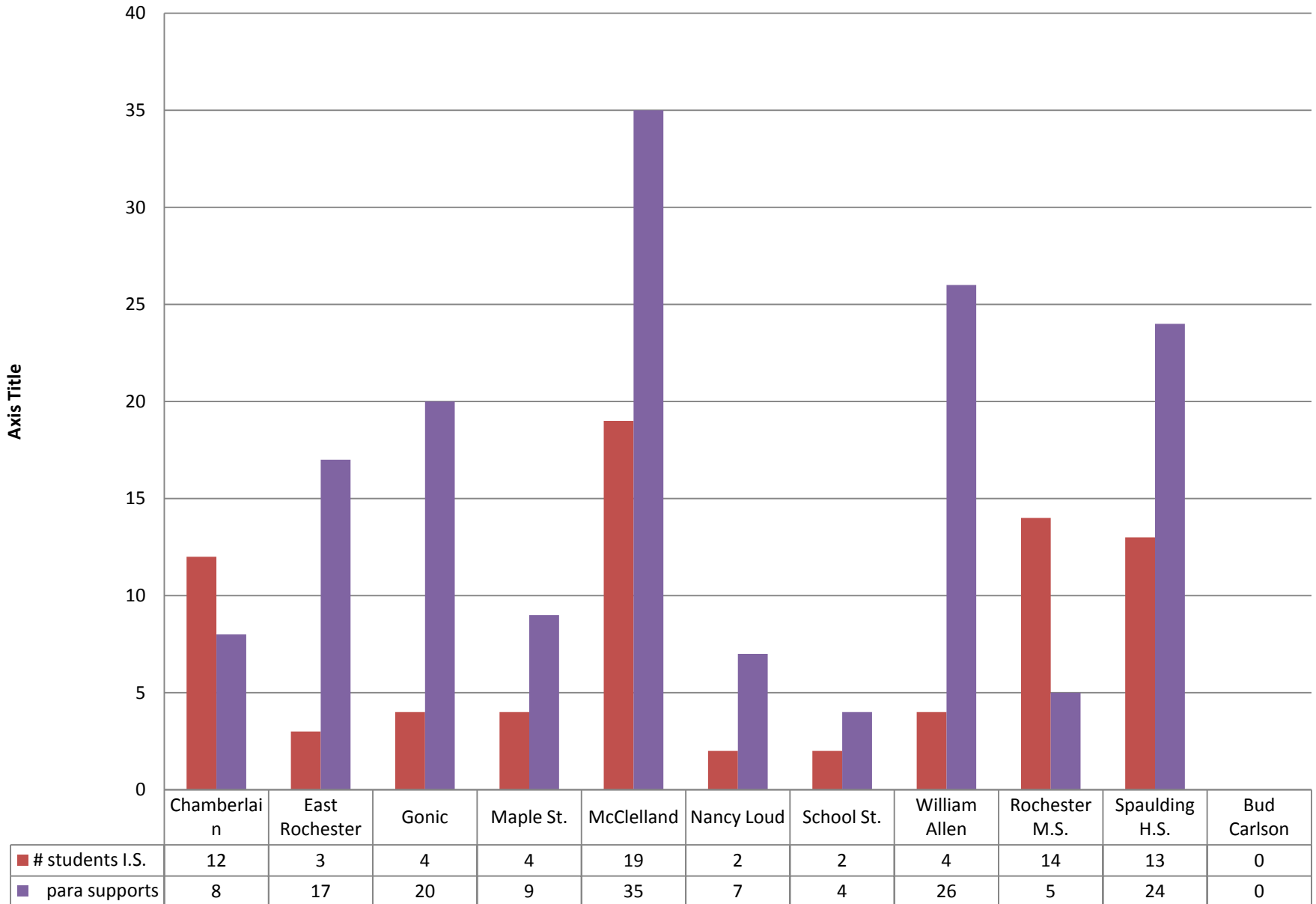
# Number of special education students



# Percent of special education students



## Number of students with supports



## % Special Education Free and Reduce Lunch

