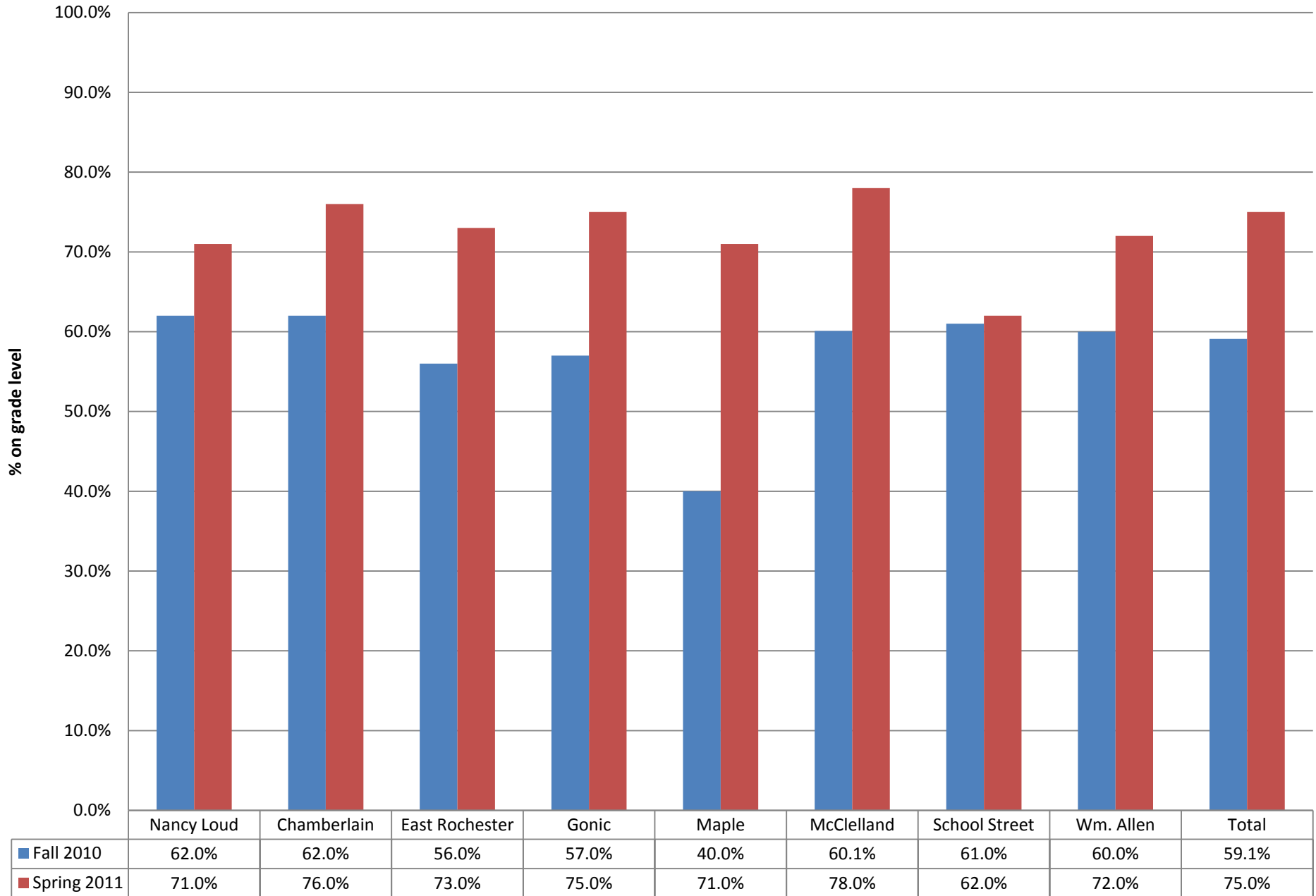


90% Reading Goal Spring 2011

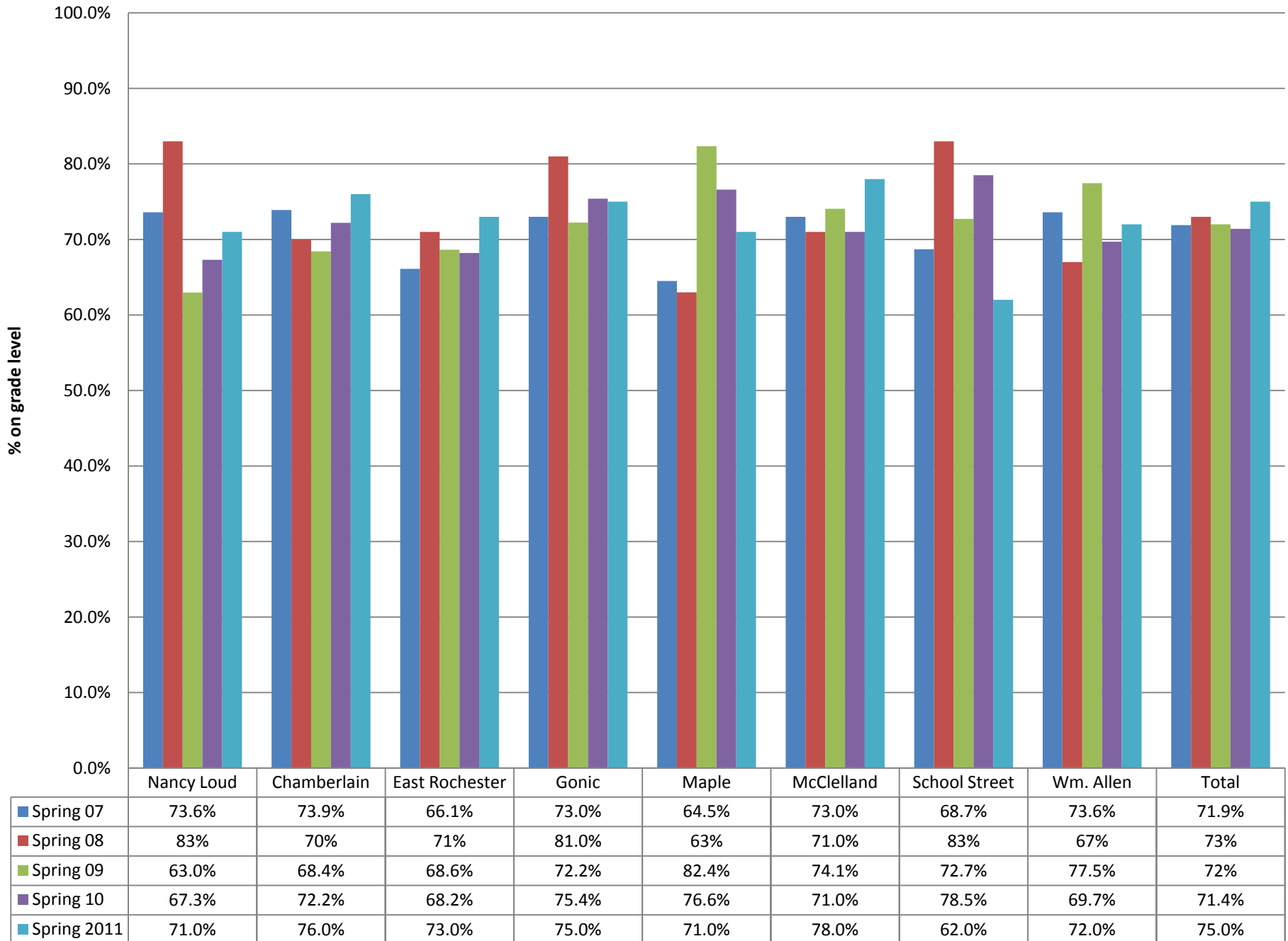
- 90 % Reading Goal Fall to Spring
- Spring History
- Grade 3 Reading
- Grade 3 and School-wide Math
- Math Mean from 2003
 - Grade 2,5,8
- Growth Report

Reading

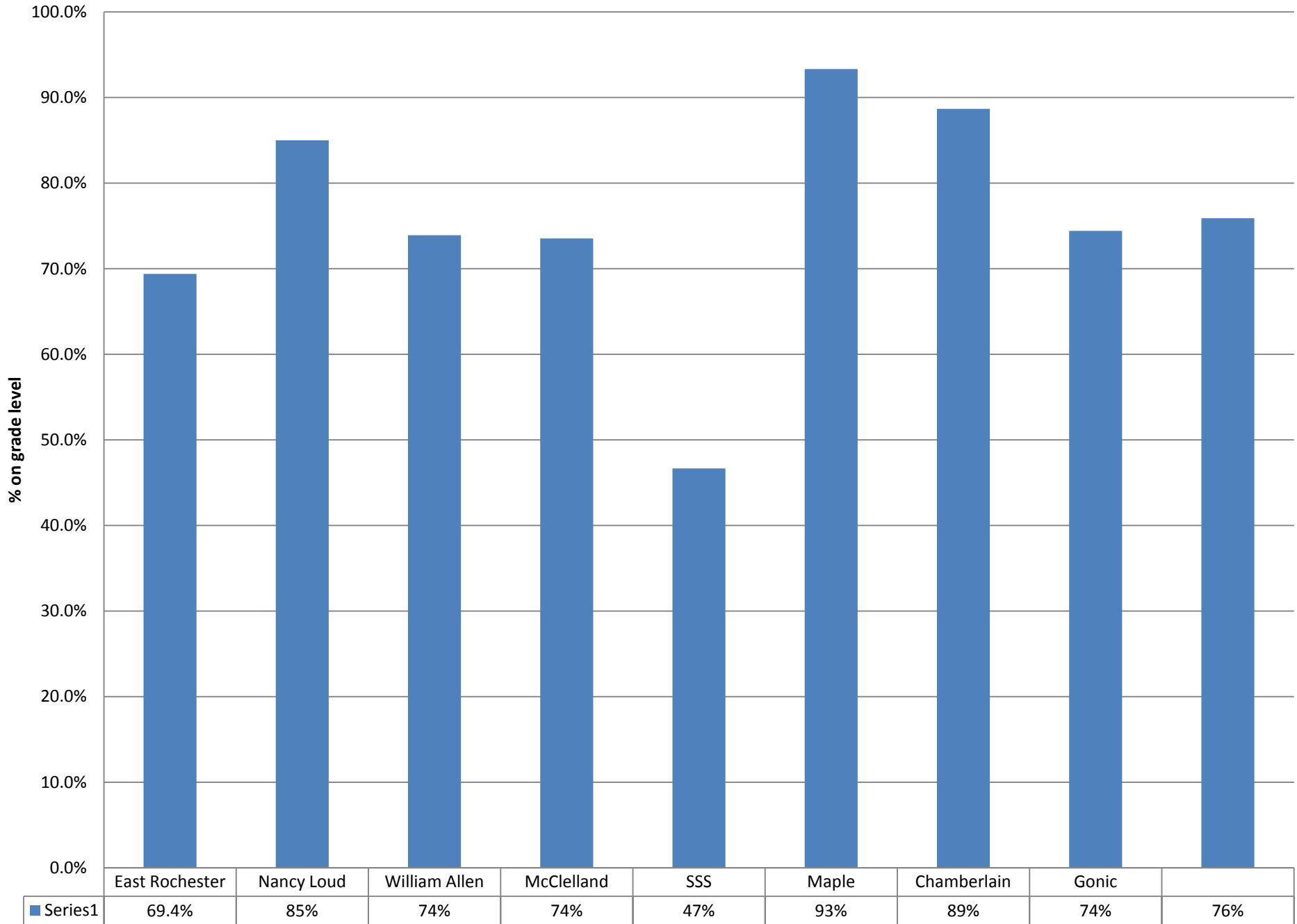
Fall 2010 to Spring 2011



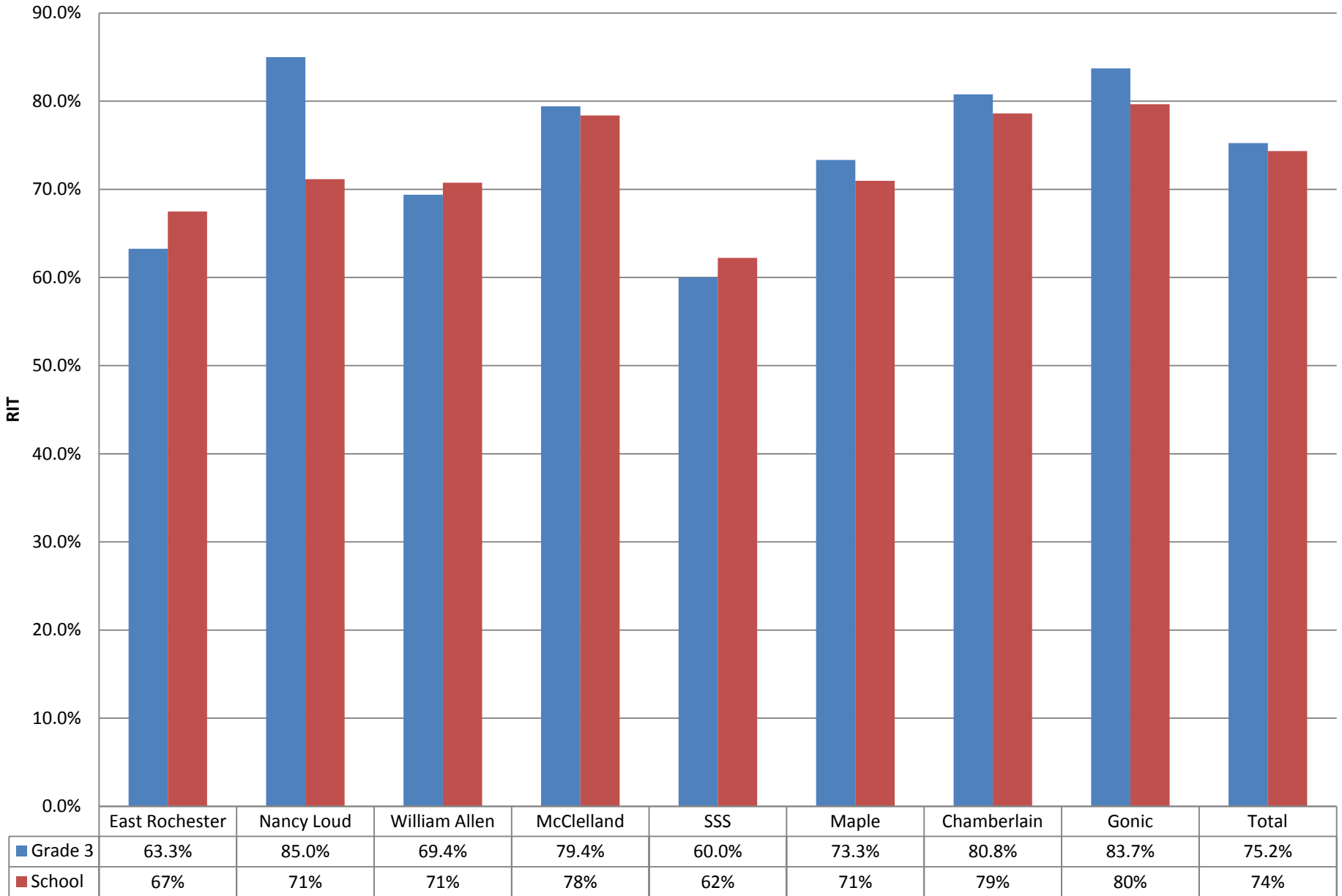
Spring Reading History



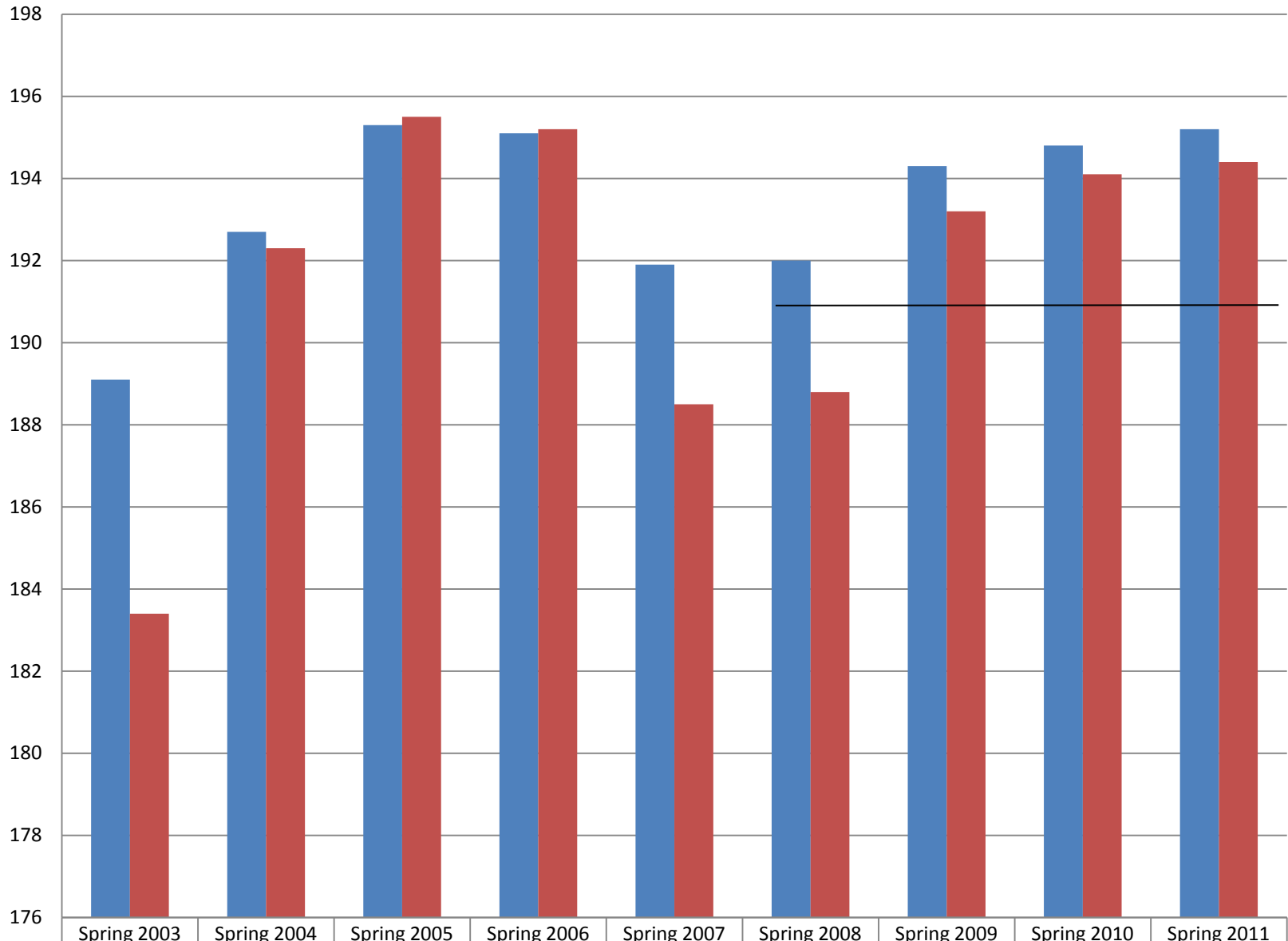
Grade 3 Reading Spring 2011



Spring 2011 Math on Grade level



Grade 2 Math Spring 2011



■ Mean RIT	189.1	192.7	195.3	195.1	191.9	192	194.3	194.8	195.2
■ Numbers and Operations	183.4	192.3	195.5	195.2	188.5	188.8	193.2	194.1	194.4

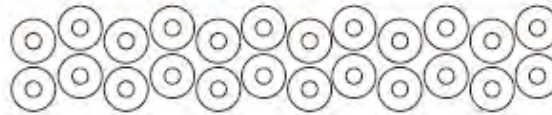
Number Sense

Students understand and apply concepts of numbers including representing, identifying, counting, comparing, ordering, equivalence, and number theory.

Estimation and Computation

Students understand the processes for computation and can accurately compute and solve problems using whole numbers, fractions, decimals, integers, rational, and real numbers.

191-200



How many dozen doughnuts?

- A. 3
- B. 24
- C. $2\frac{1}{2}$
- ✓ D. 2
- E. 4

$$\frac{5}{7} - \frac{3}{7} =$$

- A. $\frac{8}{7}$
- B. 2
- ✓ C. $\frac{2}{7}$
- D. 0
- E. 7

201-210

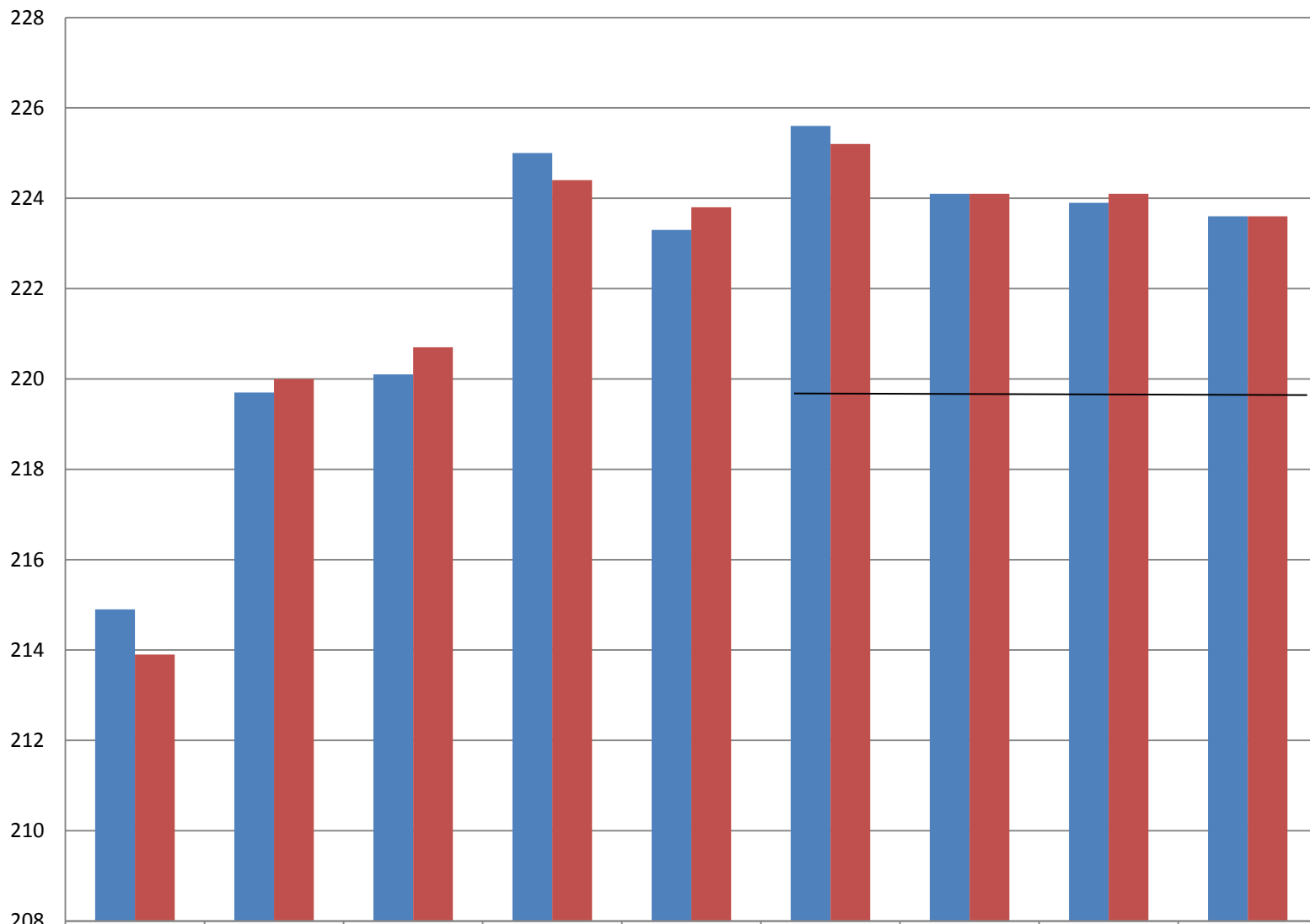
What is $\frac{6}{12}$ in simplest form?

- ✓ A. $\frac{1}{2}$
- B. $\frac{12}{24}$
- C. $\frac{2}{4}$
- D. $\frac{1}{6}$
- E. $\frac{1}{12}$

$$0.32 \div 8 =$$

- A. 4.3
- B. 0.15
- ✓ C. 0.04
- D. 280
- E. 43.75

Grade 5 Math Spring 2011



RIT

■ Mean RIT
■ Numbers and Operations

	Spring 2003	Spring 2004	Spring 2005	Spring 2006	Spring 2007	Spring 2008	Spring 2009	Spring 2010	Spring 2011
Mean RIT	214.9	219.7	220.1	225	223.3	225.6	224.1	223.9	223.6
Numbers and Operations	213.9	220	220.7	224.4	223.8	225.2	224.1	224.1	223.6

Grade 5 RIT 219.2

Number Sense

Students understand and apply concepts of numbers including representing, identifying, counting, comparing, ordering, equivalence, and number theory.

Estimation and Computation

Students understand the processes for computation and can accurately compute and solve problems using whole numbers, fractions, decimals, integers, rational, and real numbers.

221-230

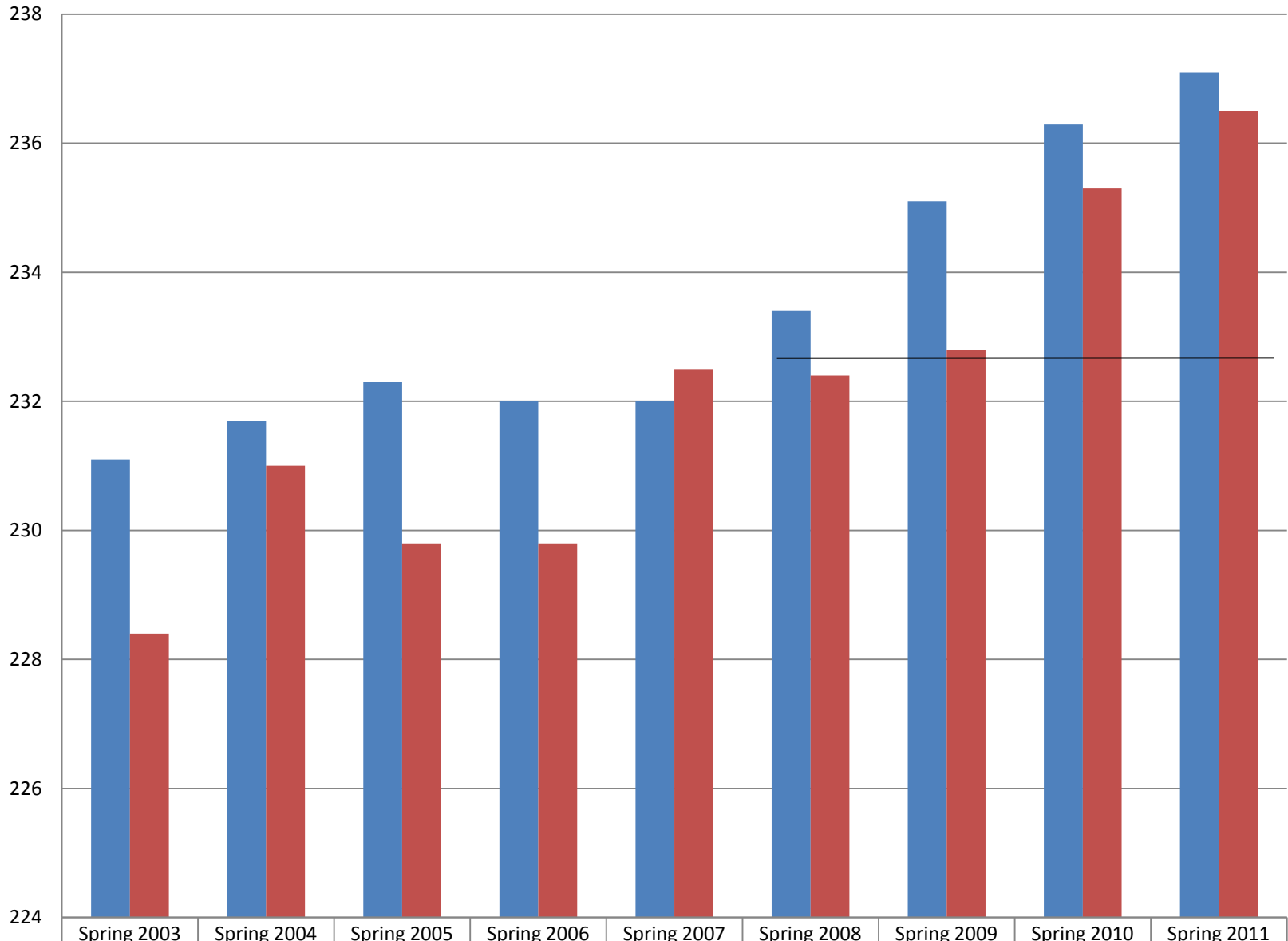
What is the Greatest Common Factor of 54 and 72?

- A. 9
- ✓ B. 18
- C. 1
- D. 2
- E. 6

$-6 + (-7) =$

- A. +13
- B. -1
- C. 42
- D. 1
- ✓ E. -13

Grade 8 Math Spring 2011



■ Mean RIT	231.1	231.7	232.3	232	232	233.4	235.1	236.3	237.1
■ Numbers and Operations	228.4	231	229.8	229.8	232.5	232.4	232.8	235.3	236.5

Number Sense

Students understand and apply concepts of numbers including representing, identifying, counting, comparing, ordering, equivalence, and number theory.

Estimation and Computation

Students understand the processes for computation and can accurately compute and solve problems using whole numbers, fractions, decimals, integers, rational, and real numbers.

231-240

What is $2\frac{1}{8}$ written as a decimal?

- A. 2.25
- B. 2.1
- ✓ C. 2.125
- D. 2.13
- E. 2.5

8 is what % of 32?

- A. $\frac{1}{4}$
- B. 4%
- C. 20%
- ✓ D. 25%
- E. 2.56%

241-250

43,000 equals:

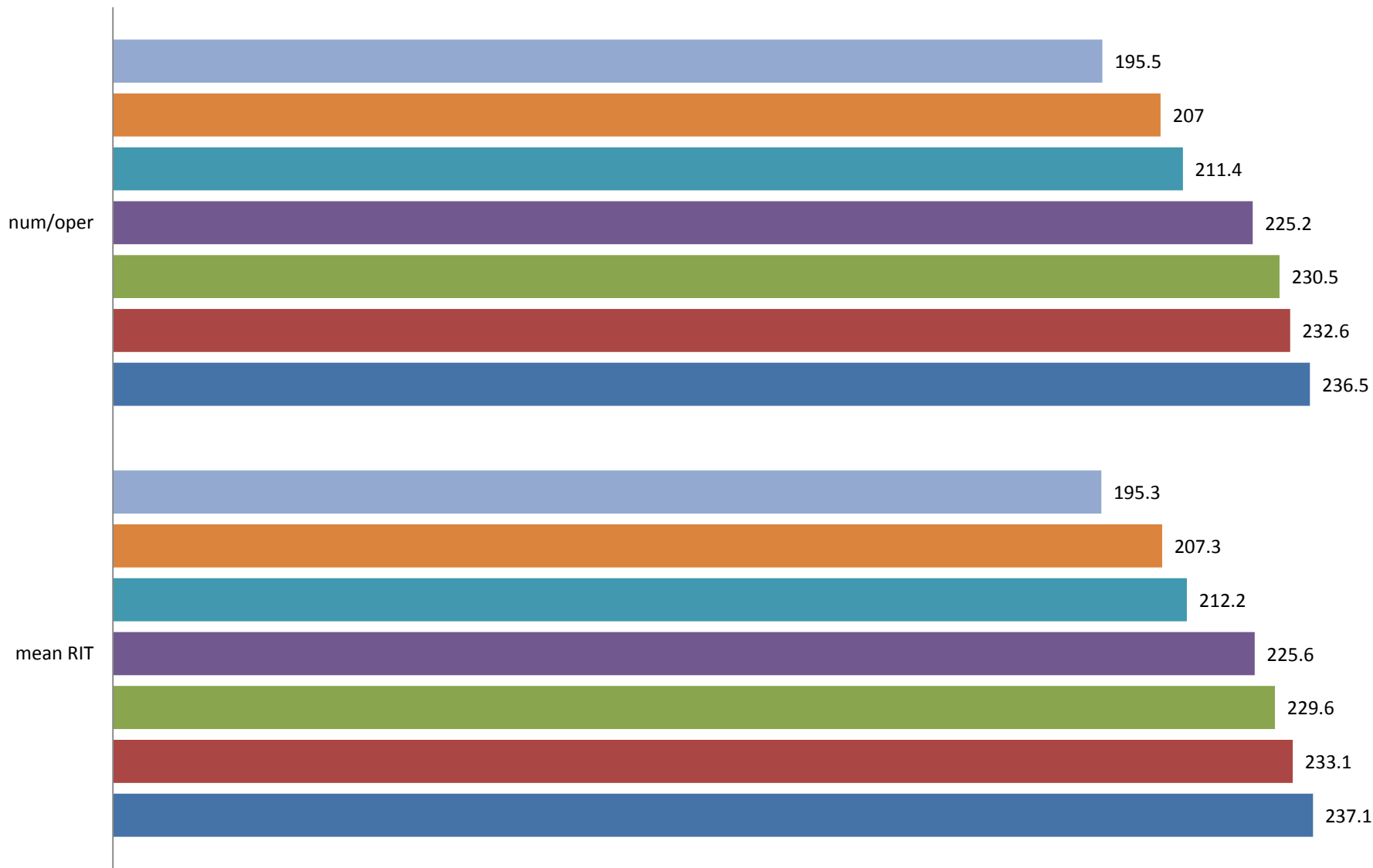
- A. 4.3×10^3
- ✓ B. 4.3×10^4
- C. 4.3×10^5
- D. 43×10^4
- E. 43×10^5

$\frac{31}{6} - (-3\frac{3}{8}) =$

- ✓ A. $8\frac{13}{24}$
- B. $4\frac{1}{7}$
- C. $1\frac{19}{24}$
- D. $17\frac{7}{16}$
- E. $-17\frac{7}{16}$

Grade 2 to 8 current 8th Graders

Spring 2005 Spring 2006 Spring 2007 Spring 2008 Spring 2009 Spring 2010 Spring 2011

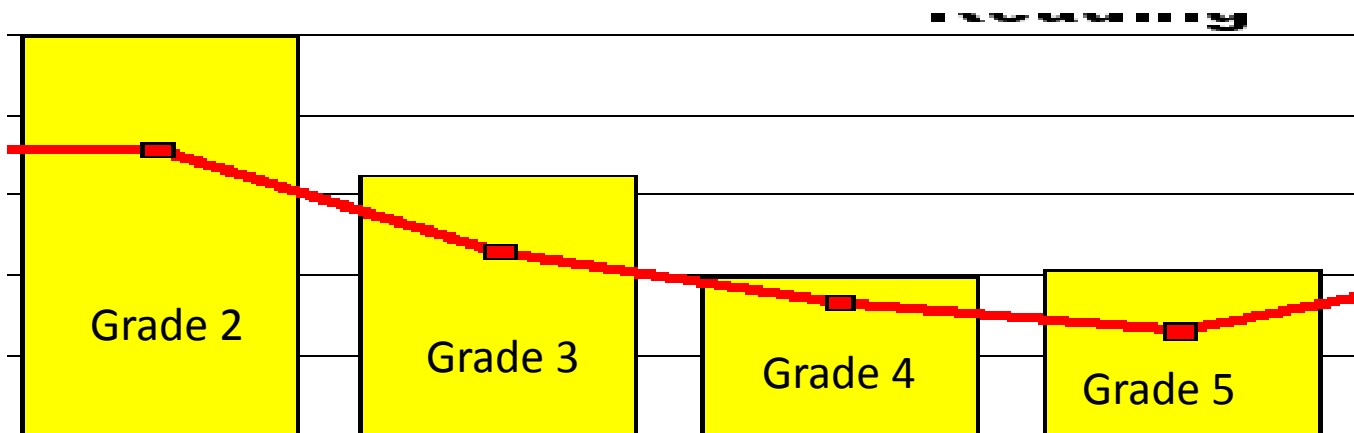


Student Growth District Summary - Fall 2010 to Spring 2011

District: Rochester School District

^ (Small Group Summary Display is ON)

	Count	Fall 2010		Spring 2011		Growth			Mean Growth Target **	Growth Index	Percent of Target	Count Meeting Growth Target	Percent Meeting Growth Target
		Mean RIT	Std Dev	Mean RIT	Std Dev	Mean	Std Dev	Std Error					
Grade 2	293	174.9	17.3	194.8	13.6	19.9	11.4	0.7	14.2	5.7	139.7	219	74.7
Grade 3	288	190.8	15.9	203.7	12.5	12.9	11.2	0.7	9.2	3.8	140.9	195	67.7
Grade 4	313	201.0	15.2	208.9	13.4	7.9	9.0	0.5	6.6	1.3	119.3	189	60.4
Grade 5	270	206.8	15.8	215.0	13.4	8.2	9.4	0.6	5.2	3.0	157.4	180	66.7



Student Growth District Summary - Fall 2010 to Spring 2011

District: Rochester School District

* (Small Group Summary Display is ON)

	Count	Fall 2010		Spring 2011		Growth			Mean Growth Target **	Growth Index	Percent of Target	Count Meeting Growth Target	Percent Meeting Growth Target
		Mean RIT	Std Dev	Mean RIT	Std Dev	Mean	Std Dev	Std Error					
Grade 2	293	179.8	12.3	195.5	11.1	15.7	8.4	0.5	13.4	2.3	116.9	194	66.2
Grade 3	287	193.6	12.8	207.4	12.5	13.8	9.1	0.5	10.7	3.1	129.1	187	65.2
Grade 4	313	204.2	12.9	215.9	13.8	11.7	7.3	0.4	9.0	2.6	129.3	206	65.8
Grade 5	258	213.5	14.1	224.0	15.3	10.5	7.4	0.5	7.4	3.2	143.1	181	70.2

