

**90% Reading Goal**  
School Year 2010-11

**Presentation to the Instruction Committee**

Rochester School Board



**McClelland Elementary School**

October 20, 2011

**SUMMARY OF HIGHLITES OF MCCLELLAND SCHOOL  
2010-2011**

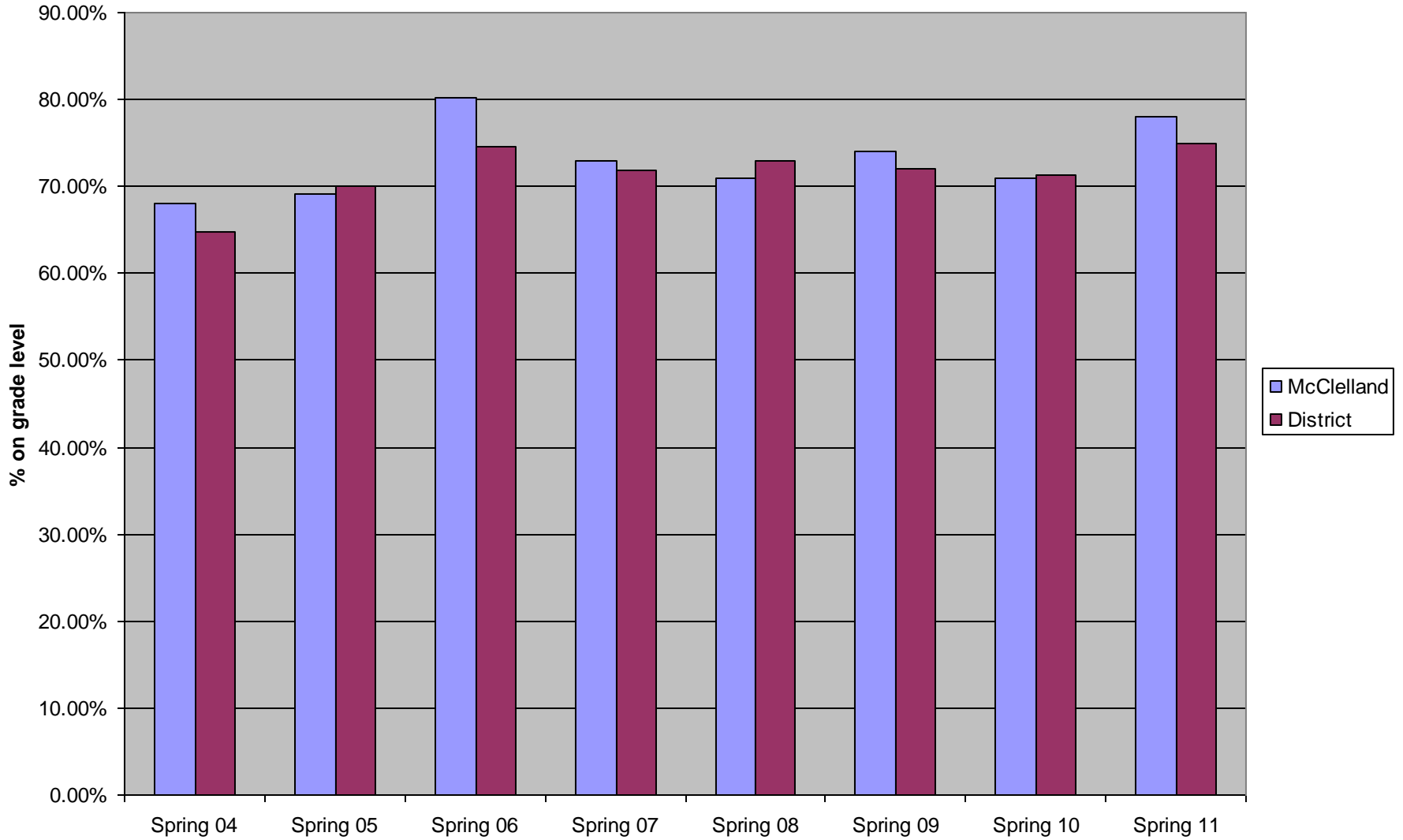
**1. Staff Development Opportunities:**

- LIPS, LETTRS, DMI at distinct level as well as development of teacher leadership training.
- Improving the use of centers as well as attention to differentiated instruction. Core instruction reviewed.
- Better understanding of disadvantaged as well as disabilities.

**2. Student Leadership Team Continues**

- 3. PBIS** –roll outs for acts of kindness, Humane Society; Whale Done; Morning Meetings; celebration of faculty and students; attendance recognition; community members such as police and fire and now bus drivers. Future plans developed from SWIS data such as understanding of core expectations and early intervention. Refer to pages 22-31.

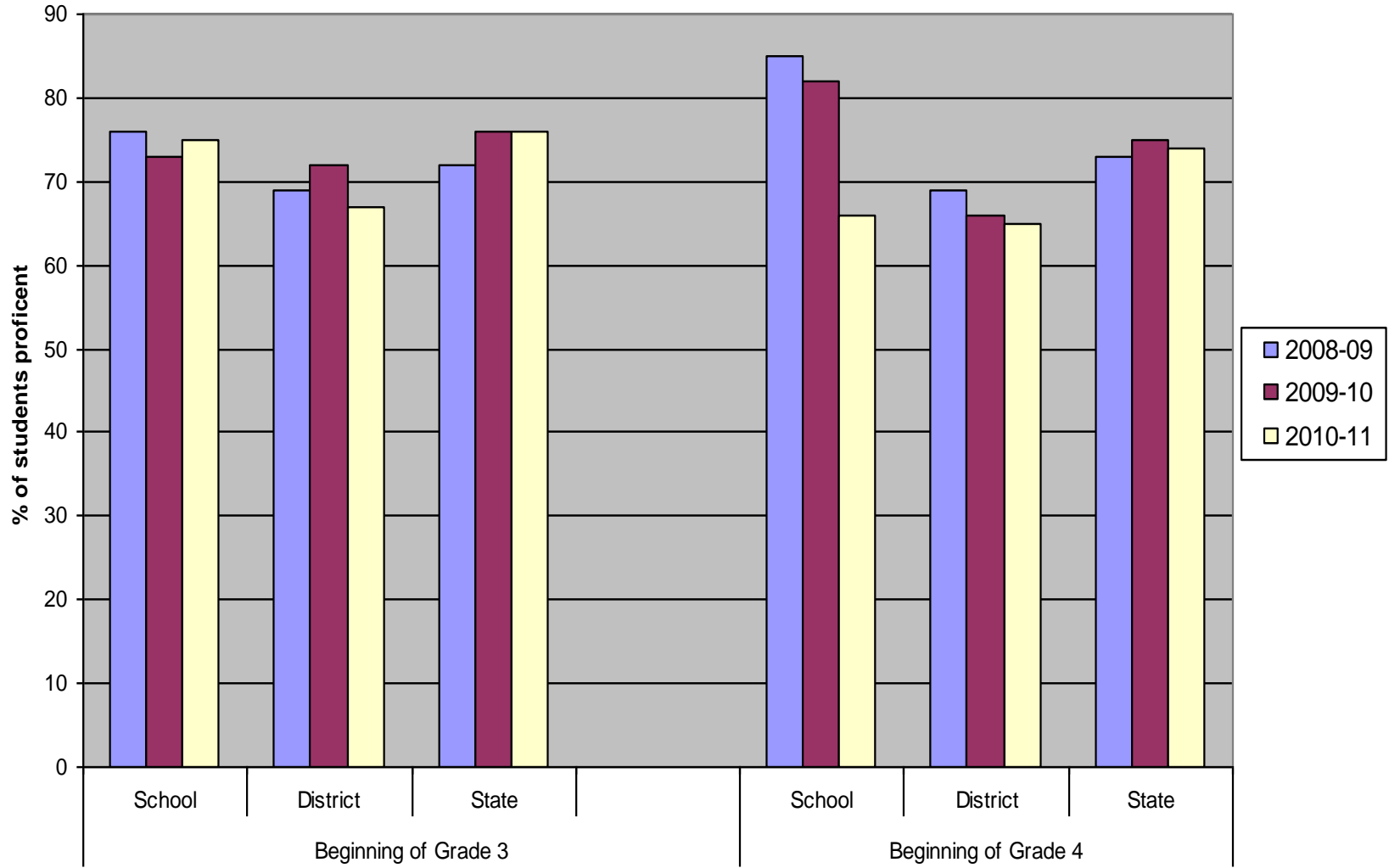
### 90% Reading Goal Grades 2 - 5



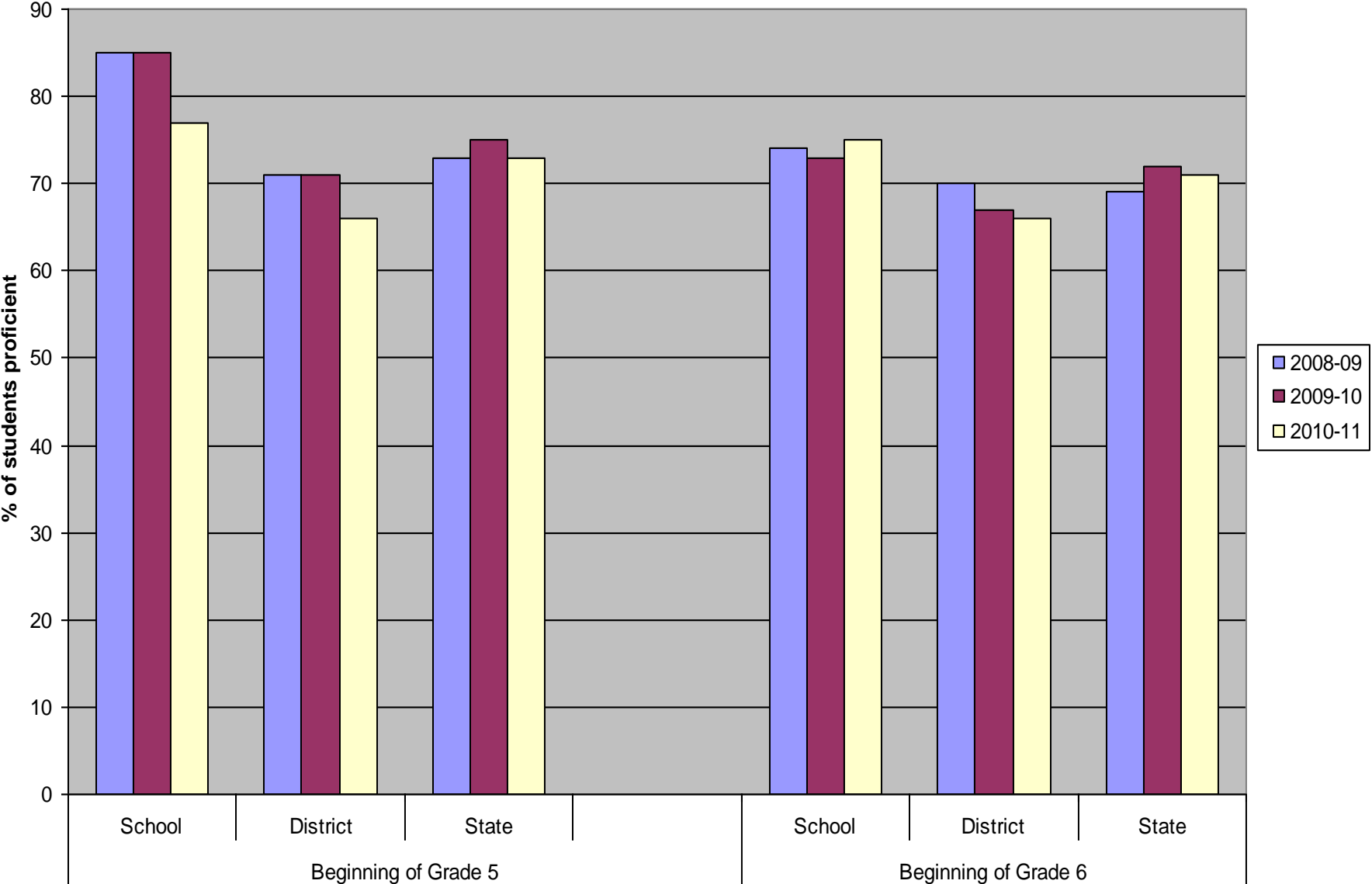
# Math and Reading NWEA Results Fall 2010-Spring 2011

<b>MATH</b>	F10(grade level)	<20%ile F	>80%ile F	S11(grade level)	<20%ile S	>80%ile S
grade 2	<b>75%</b>	<b>13%</b>	<b>27%</b>	<b>81.4%</b>	<b>3%</b>	<b>29%</b>
grade 3	<b>73%</b>	<b>13%</b>	<b>40%</b>	<b>80.1%</b>	<b>12%</b>	<b>28%</b>
grade 4	<b>66%</b>	<b>19%</b>	<b>28%</b>	<b>64%</b>	<b>18%</b>	<b>30%</b>
grade 5	<b>74%</b>	<b>16%</b>	<b>40%</b>	<b>77.8%</b>	<b>7%</b>	<b>37%</b>
School total	<b>72%</b>			<b>75%</b>		
<b>READING</b>	F10(grade level)	<20%ile F	>80%ile F	S11(grade level)	<20%ile S	>80%ile S
grade 2	<b>57%</b>	<b>32%</b>	<b>13%</b>	<b>86%</b>	<b>5%</b>	<b>34%</b>
grade 3	<b>57%</b>	<b>27%</b>	<b>35%</b>	<b>76%</b>	<b>16%</b>	<b>25%</b>
grade 4	<b>61%</b>	<b>22%</b>	<b>29%</b>	<b>68%</b>	<b>15%</b>	<b>20%</b>
grade 5	<b>73%</b>	<b>19%</b>	<b>27%</b>	<b>80%</b>	<b>11%</b>	<b>24%</b>
School total	<b>62%</b>			<b>78%</b>		

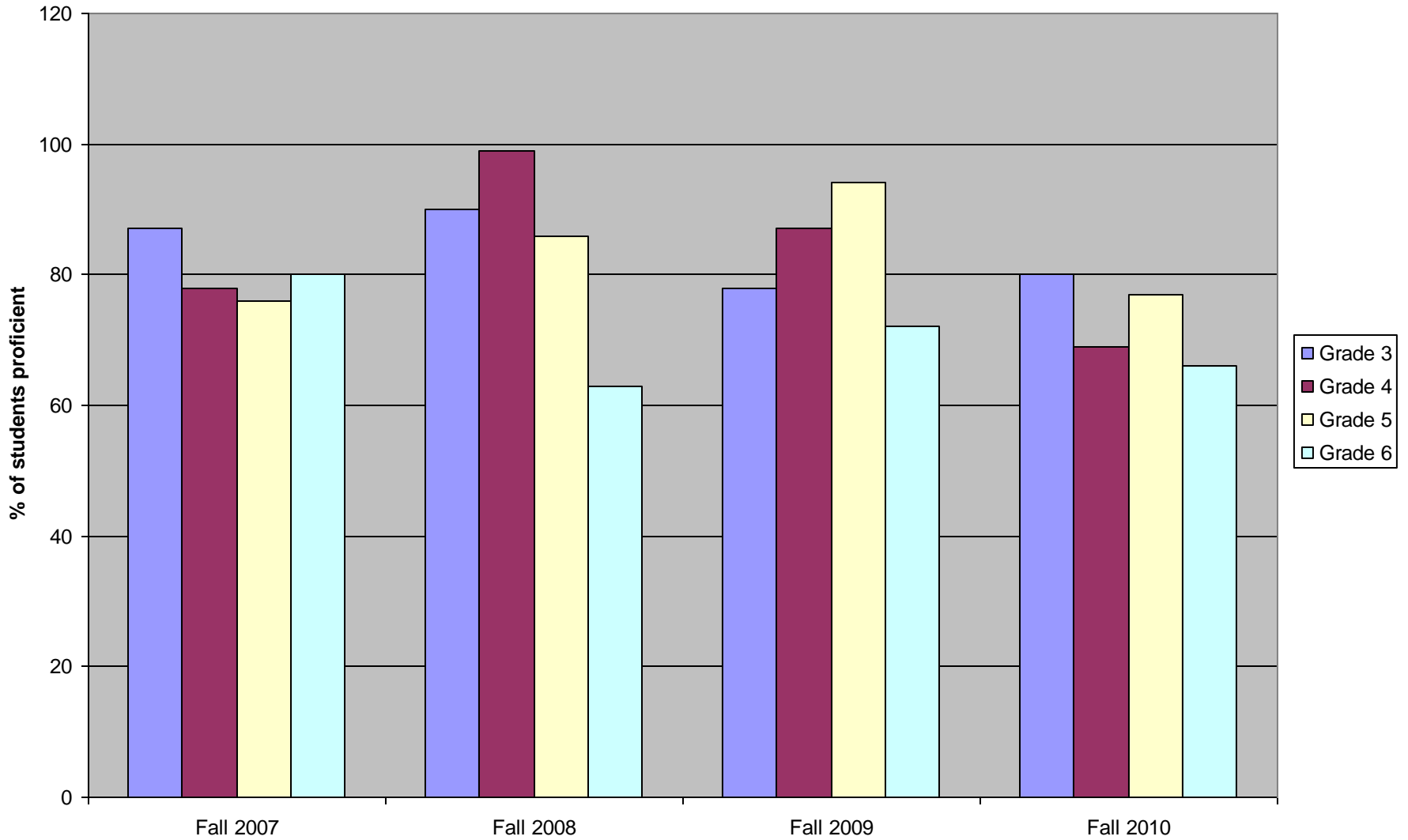
# NECAP MATH PROFICEINCY



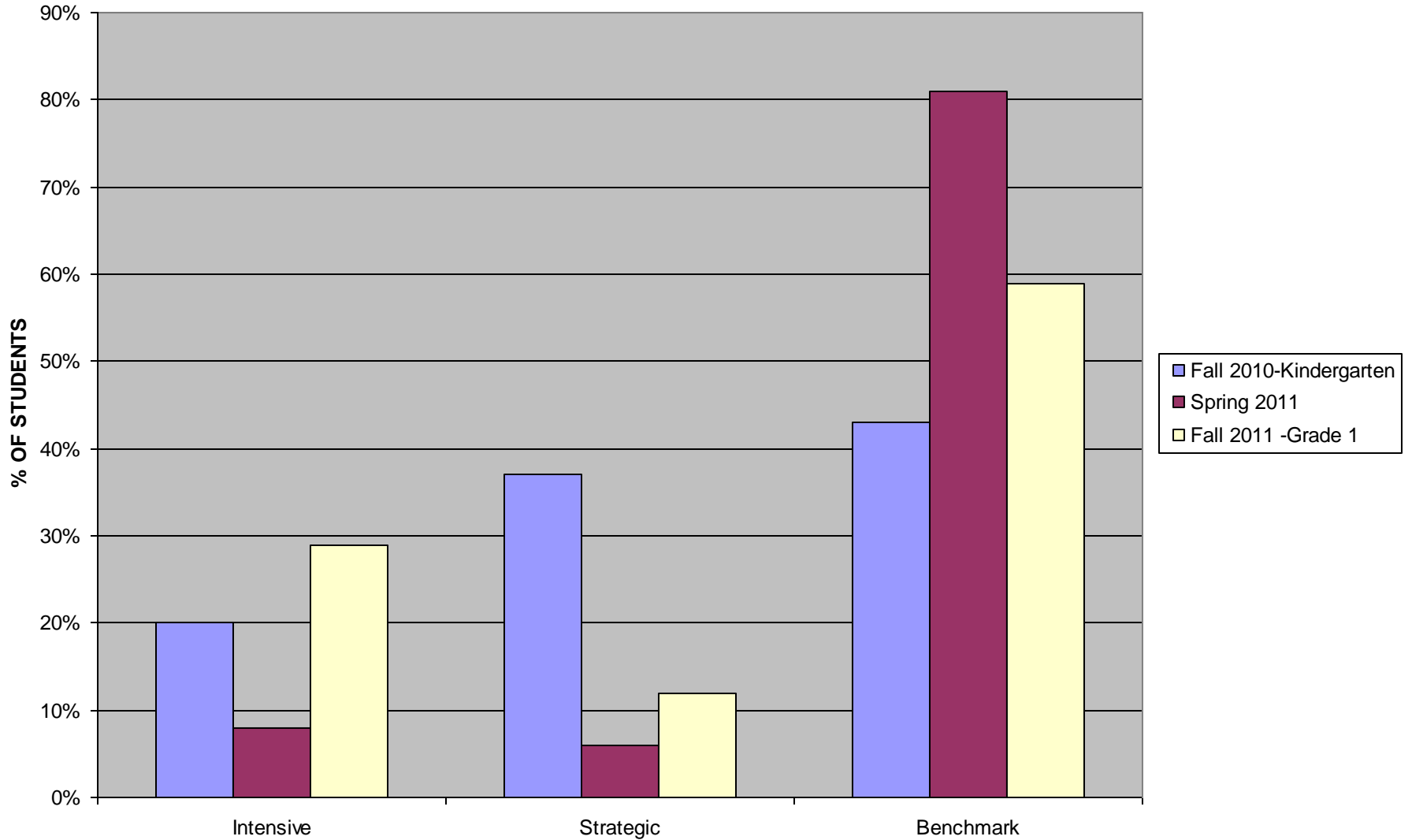
# NECAP MATH PROFICIENCY



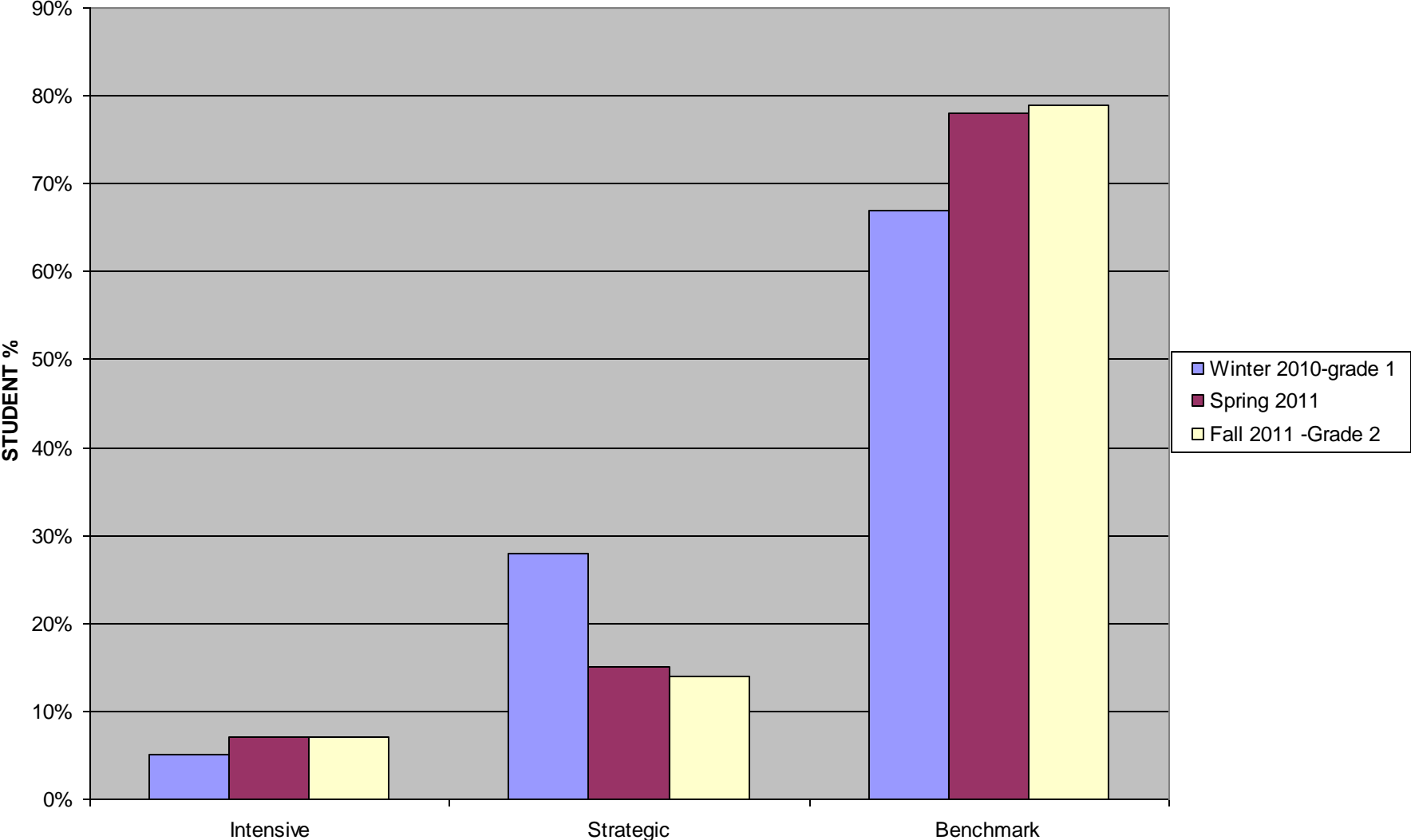
# NECAP READING PROFICIENCY



# STUDENT PERCENTAGES FOR DIBELS KINDERGARTEN CLASS 2010-11



**STUDENT PERCENTAGES FOR DIBELS GRADE 1 CLASS 2010-11**



# Summaries

- After School Tutoring- pages 11-13
- Title 1 - pages 14-16
- Summer Tutoring- pages 17-21
- Professional Learning Communities – page 32
- Goals – page 33

And The Good Life.....page 34